



“The Party of Principle”

PRECINCT COMMITTEEMAN HANDBOOK

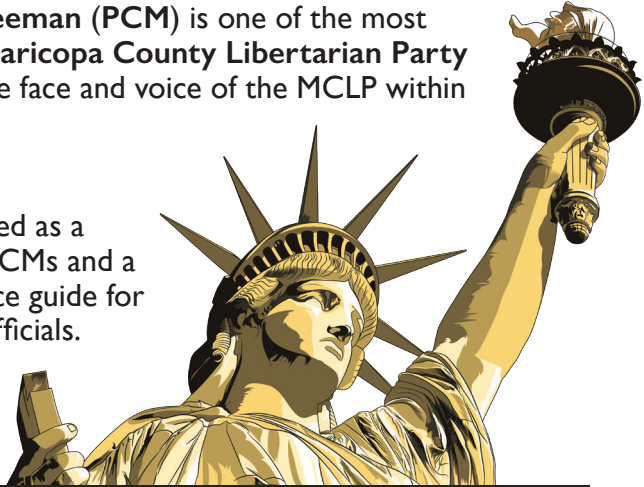
***“Eternal vigilance is the price of liberty;
power is ever stealing from the many to the few.”***

~Wendell Phillips

Welcome!

The **Precinct Committeeman (PCM)** is one of the most important positions in **Maricopa County Libertarian Party (MCLP)**. The PCM is the face and voice of the MCLP within each precinct.

This Handbook is intended as a resource for recruiting PCMs and a basic entry-level reference guide for PCMs and other Party officials.



WHAT IS A PRECINCT COMMITTEEMAN?

The office of Precinct Committeeman (PCM) is defined in Arizona Revised Statutes (ARS) Section 16, Chapter 5, Article 2.

- **The PCM is a partisan elected official, no less than any other local, county, or state government official. Each PCM is elected by the registered LP voters in their precinct.**
- **Any registered LP voter is eligible to seek the office of PCM for the precinct within which he or she resides. Vacancies created by a PCM moving out of the precinct or changing political party registration can be filled by appointment.**

The PCMs minimum duties are to assist the Party in voter registration and assist registered Libertarians to vote. More than that, however, PCMs are the LP's foundational grass-root activist organizers, responsible to their precinct voters and the MCLP. PCMs are expected to take on leadership roles not only to increase LP voter registration and voter turnout, but also to advance LP principles and political positions. Unlike the Democrat and Republican Parties, the LP — the party of principle — is necessarily an ideological party, and PCMs are the MCLP's cadre of principled activists for halting and rolling back the size and scope of government in our county.

THE PCM & THE MARICOPA COUNTY LIBERTARIAN PARTY STRUCTURE

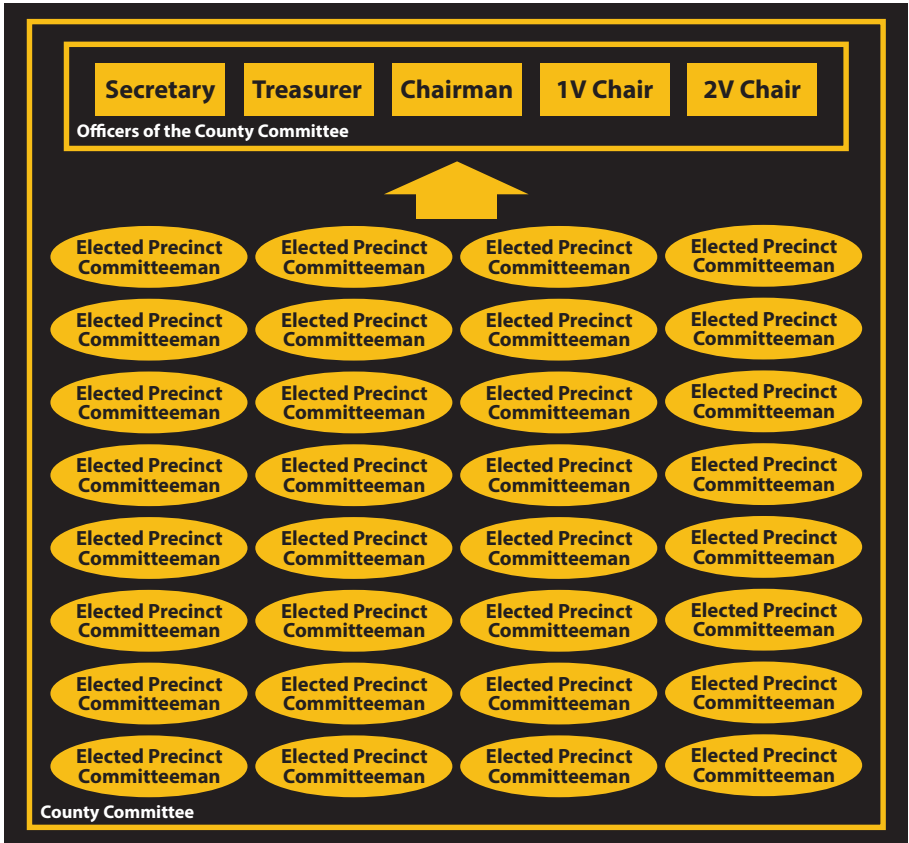
Voters elect PCMs every two years in the primary election of general election years. Between elections the County Chairman can select PCMs to fill precinct vacancies for approval by the County Board of Supervisors.

What is a Precinct?

There are 935 precincts in Maricopa County as of January 1, 2022 (see map at the County Recorder's website: <https://recorder.maricopa.gov>). Precincts are subdivisions of Legislative Districts (LD), of which there are 20 LDs either wholly or partially within Maricopa County. Each precinct with at least one LP registered voter is entitled to a minimum of one LP PCM. One additional PCM position per precinct is allotted for each 125 voters (or major fraction thereof) registered as Libertarian in the precinct as of March 1 of the year in which the general election is held. The full roster of all LP PCMs (and PCMs of all parties) can be found at the Maricopa County Elections Department website on its Precinct Committeemen Information page.

The structural requirements for political parties are spelled out in the Arizona Revised Statutes (ARS Title 16; Chapter 5, Political Parties; Article 2, Party Organization and Government). Pursuant to ARS, the components of AZLP structure are the County Committees, the State Committee, and the State Executive Committee.

County Committee – A County committee is formed at the time a County party seeks official recognition by the AZLP. The whole number of PCM's constitute the county committee, and therein participate in selecting and serving in party leadership positions. Only elected precinct committeemen are permitted to vote at state and county committee organizing meetings. The county committee meets no later than the second Saturday in January following a general election to elect from its membership the officers of the County LP board (chairman, first VC, second VC, secretary and treasurer) and State Committeemen (SCM). The county chairman is an ex officio member of the AZLP state committee. PCMs are also eligible for appointment to county and state standing and ad hoc committees.



General structure of the County Committee. Officers are elected by the PCMs from among their number.

State Committee – State Committeemen make up the State Committee and elect the state officers. The number of SCM slots are determined by the number of elected PCMs in the county, plus the county Chair. In addition to County Chairs, each county is allowed one additional SCM for every three elected PCM’s. SCMs are chosen at the first meeting of the County Committee from the Committee’s elected membership.

State Executive Committee – The executive committee of the state committee consists of the elected officers of the State committee, any national committeemen registered in Arizona, the several county chairmen, and each county’s first and second vice-chairmen, and three members at large from each congressional district. The chairman of the state committee is also chairman of the state executive committee.



County Committee elected to State Committee. The number of members elected shall be one for every three members of the county committee, pursuant to section 16-821.

General structure of the the County's representation on the State Committee. The voting representatives from the Maricopa LP to the State Meeting are the county Chair plus 1 additional representative for every 3 elected County PCs members, chosen by the PCs from among their number.

In addition to these ARS mandated committees, the LP, similar to other political parties, has a *National Committee*. PCM's are encouraged but not required to support the national party as dues-paying (\$25 annually) members of the national party, and by affirming opposition to the use of force by anyone, including the government, to achieve political goals.

Unlike the opportunistic and power-seeking Democrats and Republicans, the LP is a party of principles and ideas, devoted to rolling back the reach of government and reducing its power on behalf of individual liberty.

The registered LP party voters residing in each precinct choose PCMs from among their number at the primary election, for a two-year term. Any voter registered Libertarian in Maricopa County is eligible to seek the office of MCLP PCM for the precinct within which he or she resides.

Many precincts are **NOT** filled, which presents a ready avenue for Libertarians who wish to take an active role in the Party. Precinct committeemen are elected in each primary election and serve a two-year term. PCM positions that become vacant can be filled by appointment.

HOW DOES ONE BECOME A PCM?

To become a PCM, first, check the PCM roster and precinct maps on the Maricopa County Recorder’s website, to see how many PCM positions there are in your precinct, and if the positions are filled or vacant. Contact your County chairman to express your interest and confirm the status of the office.

To seek election to a PCM position, you must apply to the Maricopa County Elections Department for your name to appear on the primary election ballot. Application for a place on the ballot must be made between 105 days and 75 days prior to the primary election by completing and submitting documents to the County Recorder’s Elections Department, preferably through the County chair:

- (1) PCM Nomination Paper Declaration of Qualification declaring candidacy and stating the candidate’s name as it is to appear on the ballot and that the candidate meets the qualifications of the office; and
- (2) PCM Nomination Petition, signed by the designated number of LP voters residing in the precinct. The number of signatures required is based on the number of LP voters in the precinct. Most precincts in Maricopa County require only one signature, some require 2. The greatest number of registered Libertarians in a single precinct is 80 (as of 1/1/22), there are a handful with zero. Most are within the range of 20-50.

These two documents can be downloaded from the Maricopa County Elections Department’s website. Applications for write-in candidates can also be made up until 60 days prior to the primary election.

The last step is to vote for yourself on primary election day! If nobody else runs for the same seat, you are “appointed as if elected”, and won’t even have to worry about voting for yourself — but please do anyway!

If a vacancy exists in your precinct after the primary election, you can be appointed to serve as a Precinct Committeeman until the next primary election. Vacancies are filled by the County Board of Supervisors upon the recommendation of the LP county chairman. Appointed PCMs function just like elected PCMs, (except appointed PCMs can’t vote for Party officials). If you seek to fill a vacancy, the LP county chair can provide you with an appointment form. Simply fill it out and return it to the County Chair, who will submit it to the county’s election department for approval on the Board of Supervisors’ agenda.

The overwhelming number of LP PCM positions are chronically vacant. For the PCM’s that are in place, a vacancy is created when the incumbent moves out of the precinct or changes political party registration. Filling as many PCM positions as possible is a high priority for the Party.

PARTY RULES & STATE STATUTES RELATED TO PCMs

PCMs and all Party officials should be familiar with the state laws, county procedures and regulations, and LP rules and procedures regarding party organization and elections as follows:

- ARS Title 16 – Elections and Electors; Chapters 1-8, and especially Chapter 5, Political Parties; Article 2 Party Organization and Government. <https://www.azleg.gov/ARStitle>
- Maricopa County Recorder and Elections Department websites for information on precincts, voter registration, and voting.
- MCLP, AZLP, and National LP Bylaws and Party Platforms
 - AZLP bylaws: [lpedia.org/w/images/f/ff/AZ-BYLAWS_2021.pdf](https://www.azlp.org/w/images/f/ff/AZ-BYLAWS_2021.pdf)

- County LP bylaws: <https://lpmaricopa.org/about-mclp> (Scroll down to the gold MCLP Bylaws button.)
- County LP bylaws | Google Doc: https://docs.google.com/document/d/1i8ZefSoK78R8UziCM_AhK44go7g-Qza2BozkkUwUcSo/edit?usp=sharing

WHAT ARE THE DUTIES AND RESPONSIBILITIES OF A PRECINCT COMMITTEEMAN?

Elections are not won at the state, national, or even county level; elections are won in the individual precincts, one vote at a time. The political fundamentals – such as registering voters, telephoning, door-knocking, and turning out the vote – are not glamorous and often thankless. However, these fundamentals win elections and put candidates in office.

Pursuant to ARS 16-822 E: “The minimum duties of a precinct committeeman shall be to assist his political party in voter registration and to assist the voters of his political party to vote on election days.” In undertaking these basic responsibilities of building LP registration and getting LP voters to cast their ballots, the PCM should:

Register New Voters – As of January 2022 there are 23,461 registered Libertarians in Maricopa County, 811,426 Democrats, 906,926 Republicans, and 903,980 Other (mostly undeclared independents). Set a goal for your precinct and increase it each year. Registration forms are available upon request and online from the County Elections Office. Requirements for registering voters are found in ARS 16-131 E. Registration forms are available from the Maricopa County Recorder Department of Elections.

Turn Out the LP Vote & the LP-Friendly Independent Vote – Be knowledgeable of the election calendar and maintain a checklist of election-related tasks.

Recruit & Train Volunteers – Identify Party members in your precinct who wish to become involved with Party work. Be organized, well prepared, and clear about what you expect volunteers to do, and show your appreciation.

Be the Local Advocate for the LP – Be well prepared with the LP’s positions on ballot initiatives, other ballot matters, and candidates, and be able to answer any question the people in the

precinct may ask (if they ask something you can't answer, it's best to say, "I don't know and then find the answer and get back to them).

Be Involved in Updating & Correcting the Voter List – A current accurate list of all voters in your precinct is imperative. Work with the County party officials to maintain the list of names and contact information. Stay informed of voting activity, note people who are confined voters, and people who will need a ride to the voting place.

In addition to performing the minimum duties of assisting the Maricopa County LP with voter registration, "Getting Out the Vote," and electing County party officers, high-performing PCMs are expected to:

- Actively campaign for LP candidates (and know who all the relevant candidates are from every party)
- Attend County Meetings. Monthly business meetings are held the second Wednesday of the month.
- Become familiar with Party ByLaws & State statutes relevant to political parties & elections
- Know the voters in your precinct
- Know the issues & the LP's stand on each issue
- Create enthusiasm & support for the Libertarian Party, including financial support, for the MCLP, & its principles of non-aggression, self-ownership, & private property.

Because the LP is "the party of principle" — an ideological party — it is not devoted to the mere attainment of government offices as an end in itself, nor as the sole means for reducing the size and scope of government. To successfully carry out PCM responsibilities, the PCM should:

- **Be Self-Motivated** – Don't wait to be told what to do. Be familiar with PCM & begin your work immediately upon election of appointment. If you are unsure about what you're doing, ask the party Chairman or designee.
- **Be a Planner** – Always set goals for your precinct & write a plan, with timelines & specific responsibilities to meet those goals.
- **Be a Recruiter** – Always be on the lookout for people in your precinct to work on the precinct plan. Also, identify people who might make good candidates, PCMs in other precincts, & fund raisers.
- **Be Informed** – Know the election laws, party rules, candidates, issues & Party positions; know the characteristics of your precinct; & stay informed of the government laws & programs affecting your precinct's community.
- **Be a Communicator** – Deliver the LP message throughout the precinct by written communication, telephone, flyers, publications, email, social media, or simply talking to your friends & neighbors. You are also responsible for listening to constituents, soliciting their views & ideas, helping them solve problems, answering question, & passing along constituent information to

County party officials. Engage with elected & appointed officials of the local governments that affect your precinct.

- **Be connected with other PCMs & County Party Officials** – Keep other members of the Party informed of your activities, & collaborate with them on a regular basis.
- **Be an Activist** – Stay alert to opportunities to take an active role in applying Libertarian solutions for addressing issues, including opportunities for coalitions with other individuals & organization
- **Be Willing to Devote Time** – While the time required for PCM work will vary by precinct, consistently dedicating an average of approximately three hours weekly (more during election seasons) should be sufficient for performing PCM duties & responsibilities.

CANVASSING THE VOTERS IN YOUR PRECINCT

There are two types of canvassing – going door-to-door and making phone calls. The purpose is to make direct contact each residence within the precinct to find favorable voters, register new voters who are favorable to the LP, and reinforce the support of registered Libertarians. E-mail and texts can be useful canvassing supplements, but they are not substitutes for face-to-face contact with voters. Make a point of canvassing throughout the year. Voter data needed for canvassing is maintained by the County Department of Elections and the State Party Customer Relationship Management System (CRM), and can be secured through the County Chairman. Periodic training in how to use the data will be conducted.

Some Canvassing Tips:

- If someone does not identify with a political party, simply ask questions about issues or candidates. This can indicate any favorability to the LP
- Use canvassing information to help target, set goals for registration, and get-out-the-vote (including needs for rides and absentee ballots)
- Build relationships with Libertarians in your precinct, and with members of other parties, too
- Engage in social activities with your neighbors, especially HOA meetings, school events, block parties
- Identify possible LP voters and register them
- Develop an email list of voters in your precinct
- Connect with neighbors on social media
- Learn what issues are important to your neighbor
- Invite friends and neighbors to LP events

For more information & paperwork go to:
<https://LPMaricopa.org/Precinct-Committee-Member>



Or scan the QR Code.



Maricopa County
LIBERTARIAN
PARTY

<https://LPMaricopa.org>

